

Specifications

| Model | Z-80/60 | |
|--|-------------|-------------|
| Measurements | US | Metric |
| Working height maximum* | 84 ft | 25.77 m |
| Platform height maximum | 78 ft | 23.77 m |
| Horizontal reach maximum | 60 ft | 18.29 m |
| Up and over clearance maximum | 29 ft | |
| Below ground reach | 15 ft 10 in | 4.83 m |
| A Platform length - 8 ft / 6 ft | 3ft/2ft 6in | 0.91m/0.76m |
| B Platform width - 8 ft / 6 ft | 8ft/6ft | 2.44m/1.83m |
| C Height - stowed | 9 ft 10 in | 3.00 m |
| D Length - stowed | 37 ft | 11.27 m |
| E Length - transport | 37 ft | 11.27 m |
| F Width | 8 ft 2 in | 2.49 m |
| G Wheelbase | 9 ft 4 in | 2.85 m |
| H Ground clearance - center | 12 in | 0.30 m |

Productivity

| | | |
|----------------------------------|----------------------|-----------|
| Lift capacity | 500 lbs | 227 kg |
| Platform rotation | 160° | |
| Vertical jib rotation | 135° | |
| Turntable rotation | 360° continuous | |
| Turntable tailswing - riser up | 3 ft 10 in | 1.17 m |
| Turntable tailswing - riser down | 7 ft 4 in | 2.24 m |
| Drive speed - stowed | 3.0 mph | 4.83 km/h |
| Drive speed - raised** | 0.68 mph | 1.1 km/h |
| Lift speed to full height | 76 sec | |
| Gradeability - 2WD - stowed*** | 30% | |
| Gradeability - 4WD - stowed*** | 45% | |
| Turning radius - 2WS inside | 14 ft 6 in | 4.42 m |
| Turning radius - 2WS outside | 24 ft 6 in | 7.47 m |
| Turning radius - 4WS inside | 7 ft | 2.13 m |
| Turning radius - 4WS outside | 15 ft | 4.57 m |
| Controls | 12 V DC proportional | |
| Tires | 18-625 NHS | |

Power

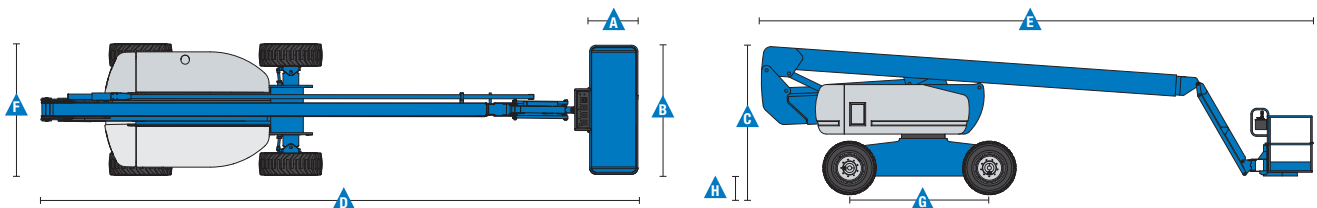
| | | |
|---------------------------------------|---|-------|
| Power source | Continental TME27 4 cylinder gas/LPG 74 hp (55 kW) T4i Deutz TD 2011 L04i 4 cylinder diesel 74 hp (55 kW) T4i Perkins 804D-33 4 cylinder diesel 63 hp (47 kW) | |
| Auxiliary power unit | 12 V DC | |
| Hydraulic tank capacity | 45 gal | 170 L |
| Fuel tank capacity – diesel machines | 35 gal | 132 L |
| Fuel tank capacity – gas/LPG machines | 30 gal | 114 L |

Weight****

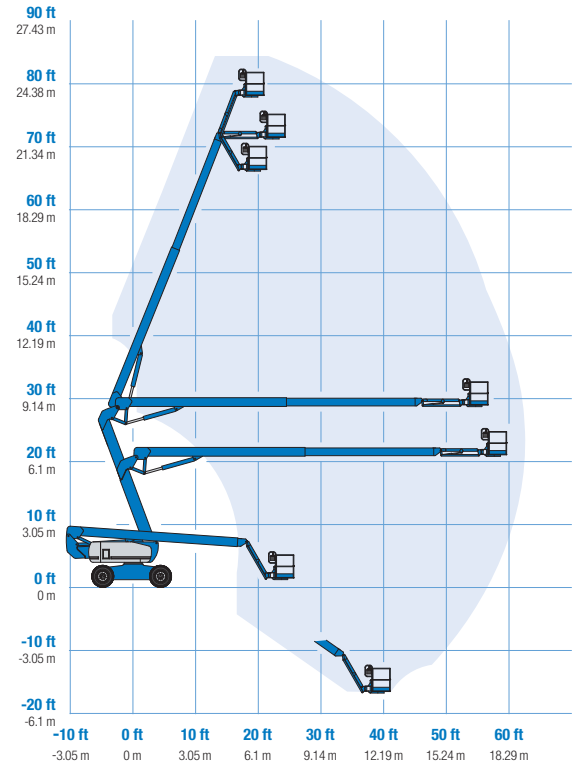
| | | |
|-----|------------|-----------|
| 2WS | 35,900 lbs | 16,284 kg |
| 4WS | 37,500 lbs | 17,010 kg |

Standards Compliance

«ANSI A92.5, CSA B354.4, EN 280, AS 1418.10



Range Of Motion Z-80/60



* The metric equivalent of working height adds 2 m to platform height. U.S. adds 6 ft to platform height.
 ** In lift mode (platform raised), the machine is designed to operate on firm, level surfaces only.
 *** Gradeability applies to driving on slopes. See operator's manual for details regarding slope ratings.
 **** Weight will vary depending on options and/or country standards.

Features

Standard Features

Measurements

- 84 ft (25.77 m) working height
- 60 ft (18.28 m) horizontal reach
- 29 ft (8.83 m) up and over clearance
- Up to 500 lbs (227 kg) lift capacity

Productivity

- 6 ft (1.83 m) jib
- Self-leveling platform
- 160° hydraulic platform rotation
- Proportional joystick controls
- Hydraulic oil cooler
- Drive enable
- AC power cord to platform
- Horn
- Hour meter
- Tilt alarm
- Descent alarm
- 360° continuous turntable rotation
- Positive traction drive
- Two speed wheel motors
- Four steering modes: front, rear, crab and coordinated
- Configurable controls to limit lift height to 70 ft

Power

- 12 V DC auxiliary power
- Anti-restart engine protection
- Auto engine fault shutdown
- On board full diagnostic and engine monitoring display
- Block heater (Continental engine)
- Dual battery

Easily Configured To Meet Your Needs

Platform Options

- Steel 8 ft (2.44 m) (standard)
- Steel 6 ft (1.83 m)
- Steel 8 ft (2.44 m) tri-entry

Jib

- 6 ft (1.83 m) jib boom

Engine Options

- 74 hp (55 kW) Continental gas/LPG
- 74 hp (47 kW) Deutz T4i diesel
- 63 hp (55 kW) Perkins T4i diesel

Drive/Steer Options

- 4WD (standard)
- 2WS (standard)
- 4WS

Axle

- Active oscillation

Tire Options

- Rough terrain foam-filled (standard)
- Rough terrain non-marking foam-filled
- High flotation air-filled rough terrain

Options & Accessories

Productivity Options

- Platform swing gate
- Half-mesh platform inserts with swing gate
- Platform top auxiliary rail
- Welder package
- Welder Ready package
- Weld leads to platform
- Air line to platform
- Biodegradable hydraulic oil
- Hostile environment kit
- Deluxe hostile environment kit
- Aircraft protection package (6 ft platform only)
- Thumb rocker steer
- Tool tray
- Pipe cradles (pair)
- Alarm package
- Lockable platform control box covers
- Work light package
- Operator Protective Structure

Power Options

- AC generator packages (110V/60Hz - 220V/50Hz, 3000W)
- Cold Weather Packages
- Diesel catalytic scrubber muffler
- LPG tank only, steel, 33.5 lbs (15.19 kg) capacity



Genie United States

18340 NE 76th Street
P.O. Box 97030
Redmond, Washington 98073-9730
Telephone +1 (425) 881-1800
Toll Free in USA/Canada +1 (800)-536-1800
Fax +1 (425) 883-3475

Distributed By: